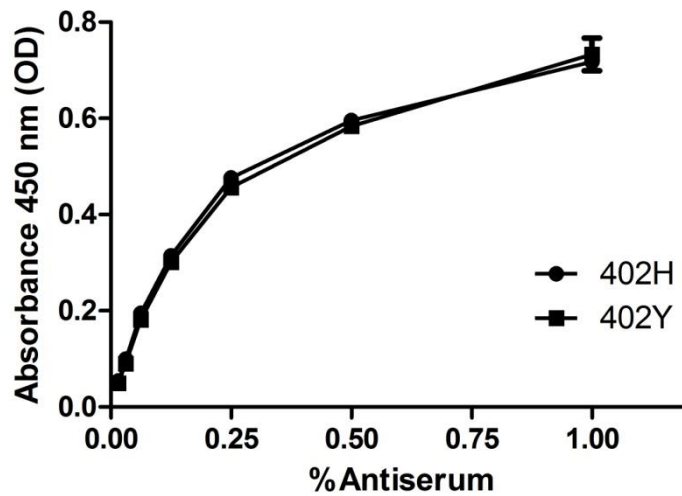


## SUPPLEMENTAL MATERIAL



**Supplemental figure 1 - The factor H-specific antiserum has equal affinities for recombinant factor H CCP6-8-402Y and -402H.** Equal amounts of recombinant factor H complement control domains 6-8 (CCP6-8) 402H and 402Y were immobilized on microtiter plates and detected using a dilution series of factor H-specific antiserum. No difference in signal was observed between the two CCP6-8 variants at all antiserum dilutions.